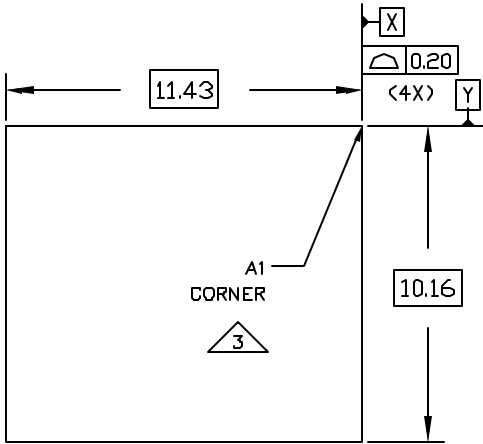
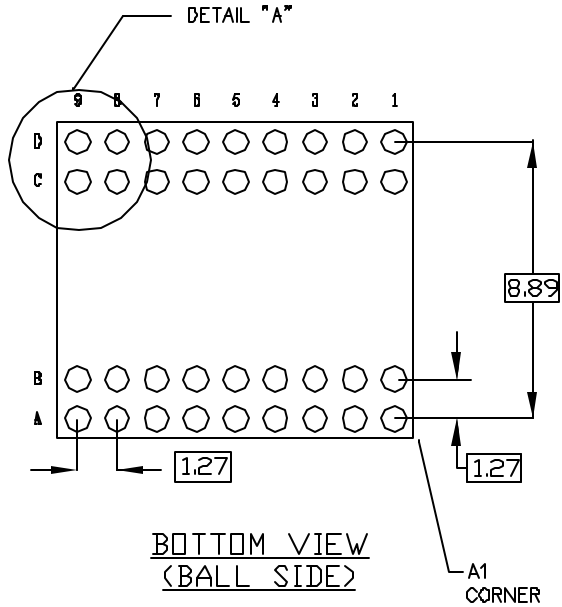


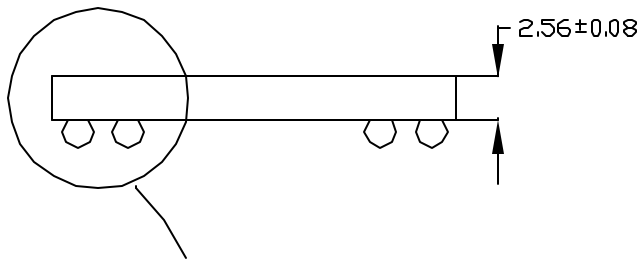
REVISIONS			
LT#	DESCRIPTION	DATE	APPROVED
A	NEW DRAWING	08/03	



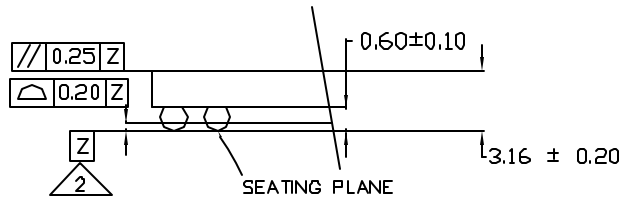
TOP VIEW



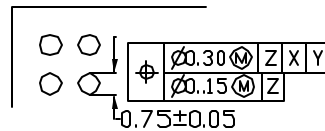
BOTTOM VIEW  
(BALL SIDE)



DETAIL "B"  
SIDE VIEW



DETAIL "B"



DETAIL "A"

NOTES:

1. ALL DIMENSIONS ARE IN MILLIMETERS.
2. PRIMARY DATUM [Z] AND SEATING PLANE ARE DEFINED BY THE SPHERICAL CROWNS OF THE SOLDER BALLS.
3. A1 CORNER MUST BE IDENTIFIED BY LASER MARK ON TOP PACKAGE.
4. BASIC SOLDER BALL PITCH IS 1.27 MM
5. A1 CORNER MUST ALSO BE IDENTIFIED BY METALLIZED MARKINGS ON BOTTOM PACKAGE.

SIGNATURE		DATE					
DOC. CONTROL:							
ENGR. MGR:				TITLE			
MFG. ENGR:				MARKETING OUTLINE DRAWING			
CHECKED BY:		TWM		08/03		10.16MM X 11.43MM, 36 BALLS, BGA, 2 LAYER	
DRAWN BY:		JFD		08/03		1.27 MM PITCH	
SIZE	FSC#	PART NO.		REV.			
A		56-G6023-001		A			
SCALE	N/A			SHEET		1 of 1	