



DOCUMENT TITLE:
MARKETING OUTLINE, 10 LEAD LGA (5.00MM X 3.20MM X 1.49MM)

DOC ID # 21-0389 NEW REV: A

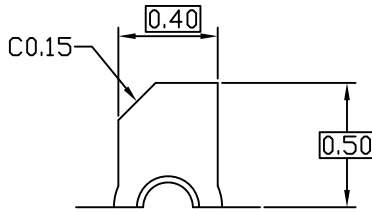
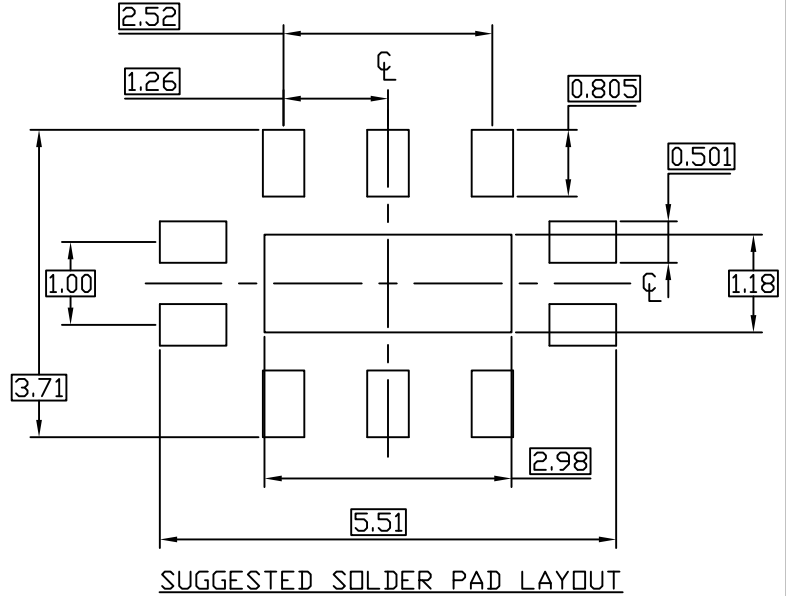
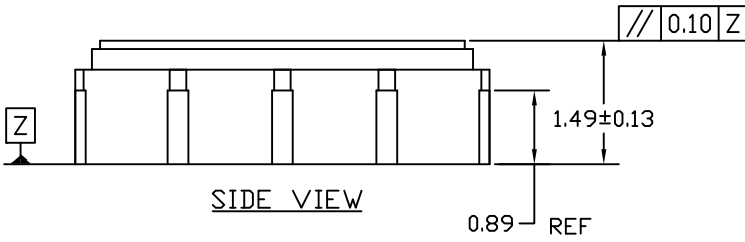
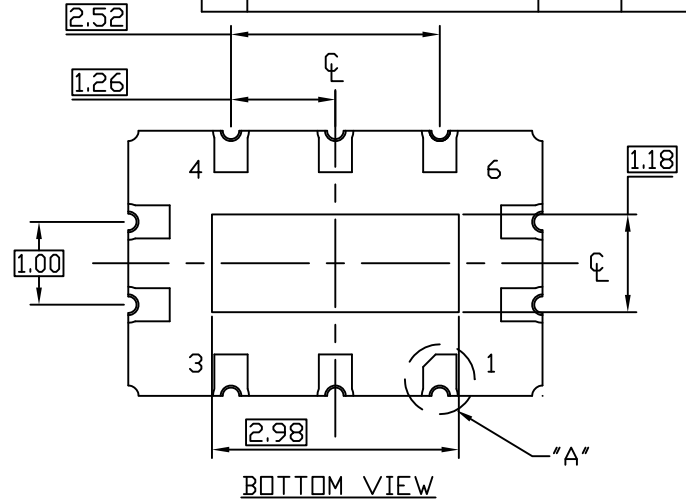
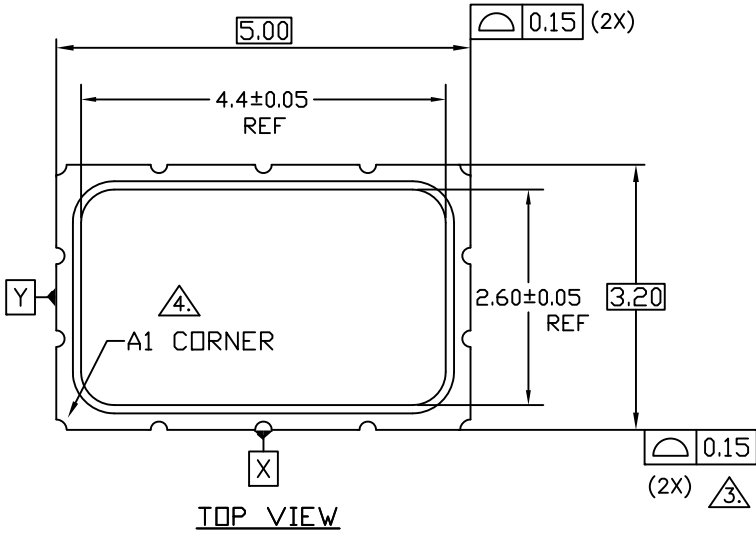
ECN#: HQ-08-5862 EFFECTIVE DATE: 06/27/08

ORIGINATOR: JEFF WALKER

MOST RECENT CHANGES

FROM	TO
DALLAS DOCUMENT CONTROL SYSTEM DOC ID# 56-G5032-002 LOGO-DALLAS/MAXIM	INITIAL RELEASE INTO MAXIM DOCUMENT CONTROL LOGO-MAXIM

REVISIONS			
LTR.	DESCRIPTION	DATE	APPROVED
A			



DETAIL "A"

NOTES:

1. DIMENSIONING AND TOLERANCES PER ASME Y14.5M-1994.
2. ALL DIMENSIONS ARE IN MILLIMETERS.
3. BILATERAL TOLERANCE ZONE IS APPLIED TO EACH SIDE OF THE PACKAGE BODY.
4. A1 CORNER MUST BE IDENTIFIED BY INK/LASER MARK ON TOP PACKAGE, AND CHAMFERED PAD ON BOTTOM PACKAGE
5. UNLESS OTHERWISE SPECIFIED TOLERANCE ± 0.13 mm.

SIGNATURE	DATE
DDC. CONTROL:	
ENGR. MGR:	
MFG. ENGR:	
CHECKED BY:	D. STORY 04/06
DRAWN BY:	JFD 04/06

MAXIM

MARKETING OUTLINE, 10 LEAD LGA
(5.00MM X 3.20MM X 1.49MM)

SIZE	FSCM NO.	PART NO.	REV.
A		21-0389	A

SCALE: N/A SHEET: 1 of 1

REVISION HISTORY

REV	CHANGES MADE	DATE	INIT.
A	ECN# HQ-08-5862. INITIAL RELEASE INTO MAXIM DOCUMENT CONTROL. LOGO-MAXIM	06/27/08	JW



TITLE: MARKETING OUTLINE, 10 LEAD LGA (5.00MM X 3.20MM X 1.49MM)

DOCUMENT I.D.
21-0389

REVISION
A

PAGE
3