



**DOCUMENT TITLE:**  
**MARKETING OUTLINE, 300L PBGA (27X27), 1.27 MM PITCH, 2.33 MM THICK, 4 LAYER**

**DOC ID # 21-0304                      NEW REV:    A**

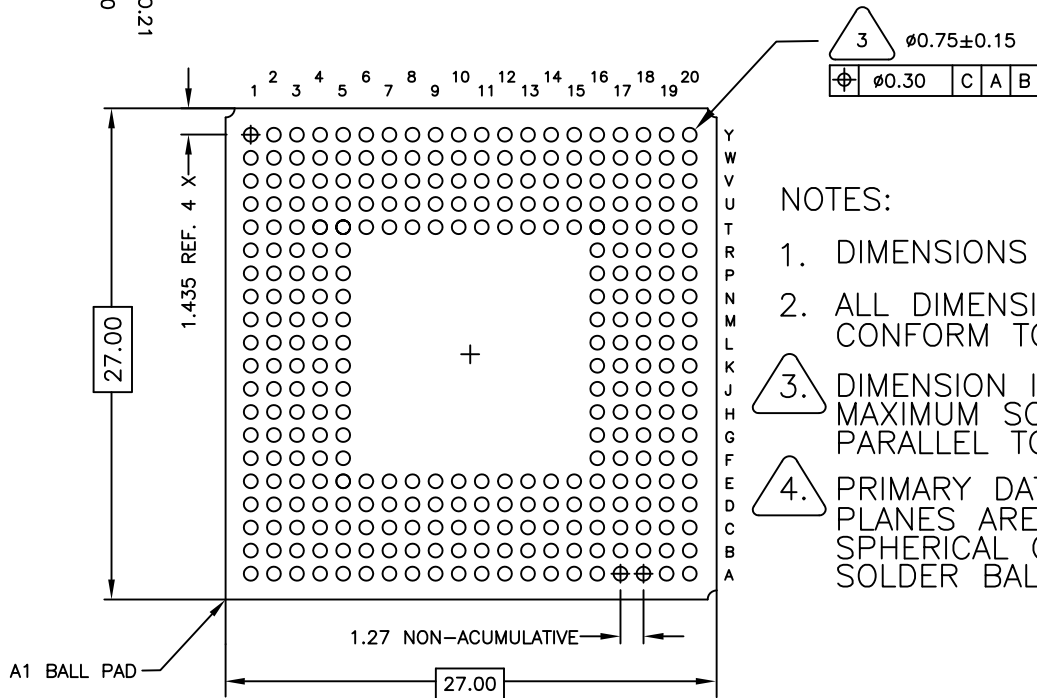
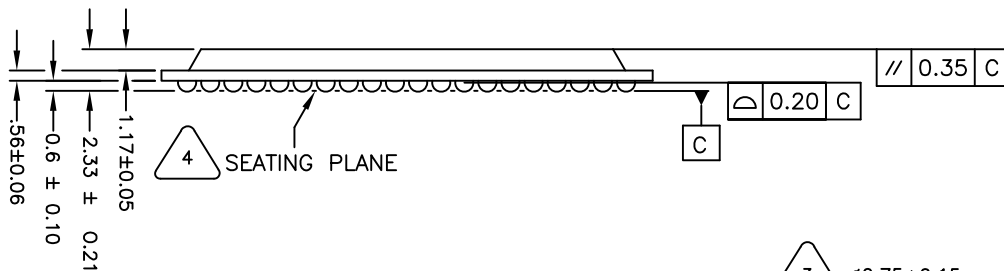
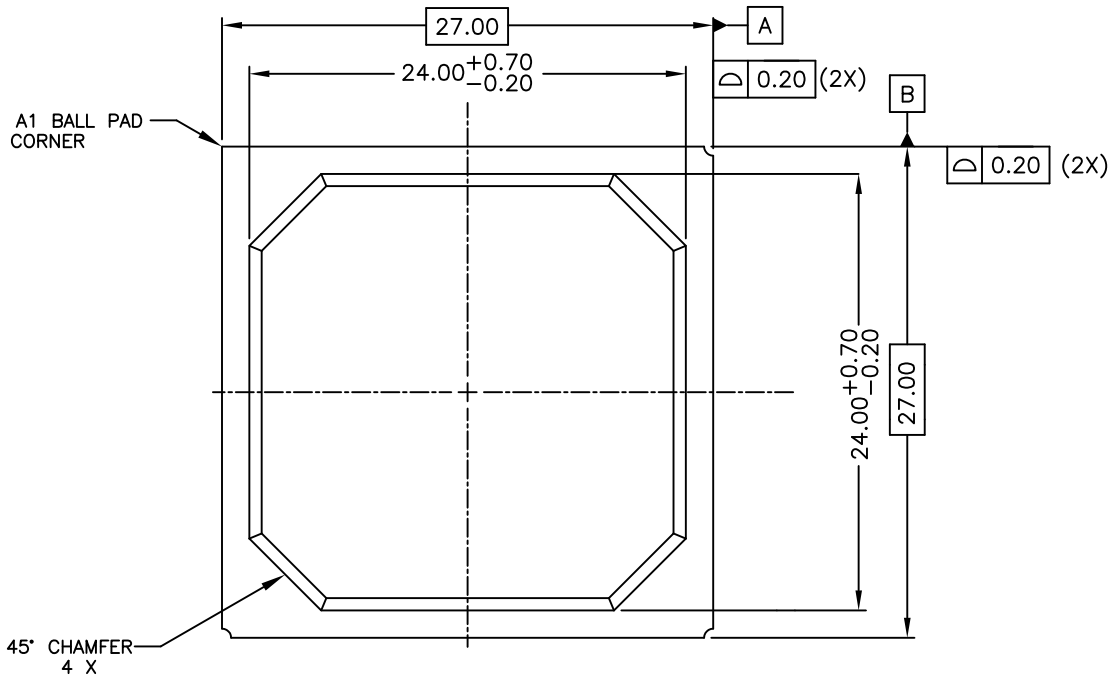
**ECN#: HQ-08-5601                      EFFECTIVE DATE: 07/15/08**

**ORIGINATOR: JEFF WALKER**

**MOST RECENT CHANGES**

<b>FROM</b>	<b>TO</b>
DALLAS DOCUMENT CONTROL SYSTEM DOC ID# 56-G6003-001 LOGO-DALLAS/MAXIM	INITIAL RELEASE INTO MAXIM DOCUMENT CONTROL LOGO-MAXIM

REVISIONS			
LTR.	DESCRIPTION	DATE	APPROVED
A			



NOTES:

1. DIMENSIONS ARE IN MILLIMETERS
2. ALL DIMENSIONS AND TOLERANCE CONFORM TO ASME Y 14.5M-1994
3. DIMENSION IS MEASURED AT THE MAXIMUM SOLDER BALL DIAMETER, PARALLEL TO PRIMARY DATUM [C]
4. PRIMARY DATUM [C] AND SEATING PLANES ARE DEFINED BY THE SPHERICAL CROWNS OF THE SOLDER BALLS.

SIGNATURE		DATE		<b>MAXIM</b>			
DDC. CONTROL:							
ENGR. MGR:				MARKETING OUTLINE, 300 L, PBGA (27X27)			
MFG. ENGR:				1.27 MM PITCH, 2.33 MM THICK, 4 LAYER			
CHECKED BY:	TWM	10/04		SIZE	FSCM NO.	PART NO.	REV.
DRAWN BY:	JFD	10/04		A		21-0304	A
				SCALE	N/A	SHEET	1 of 1

### REVISION HISTORY

REV	CHANGES MADE	DATE	INIT.
A	ECN# HQ-08-5601. INITIAL RELEASE INTO MAXIM DOCUMENT CONTROL. LOGO-MAXIM	07/15/08	JW



**TITLE:** MARKETING OUTLINE, 300L PBGA (27X27), 1.27 MM PITCH, 2.33 MM THICK, 4 LAYER

**DOCUMENT I.D.**  
21-0304

**REVISION**  
A

**PAGE**  
3