



DOCUMENT TITLE:
Marketing Outline, 10 LEAD TDFN 3.0MM X 4.0MM, 0.5MM PITCH

DOC ID # 21-0268

NEW REV: A

ECN#: HQ-08-5261

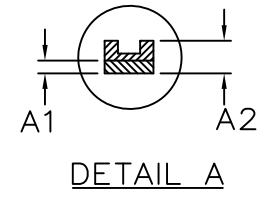
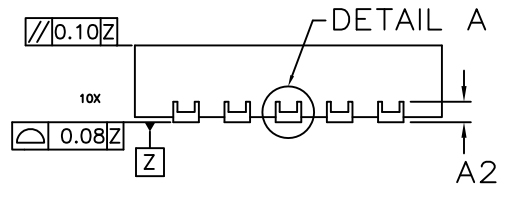
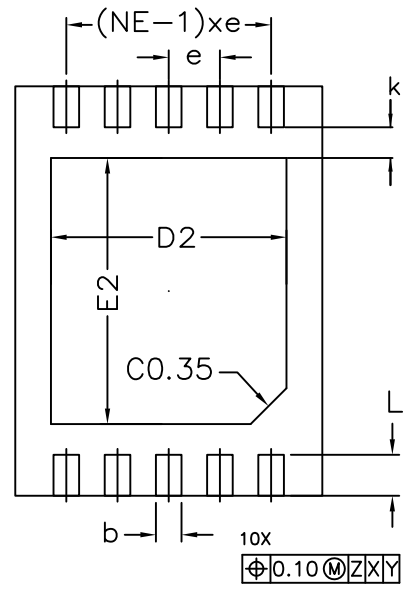
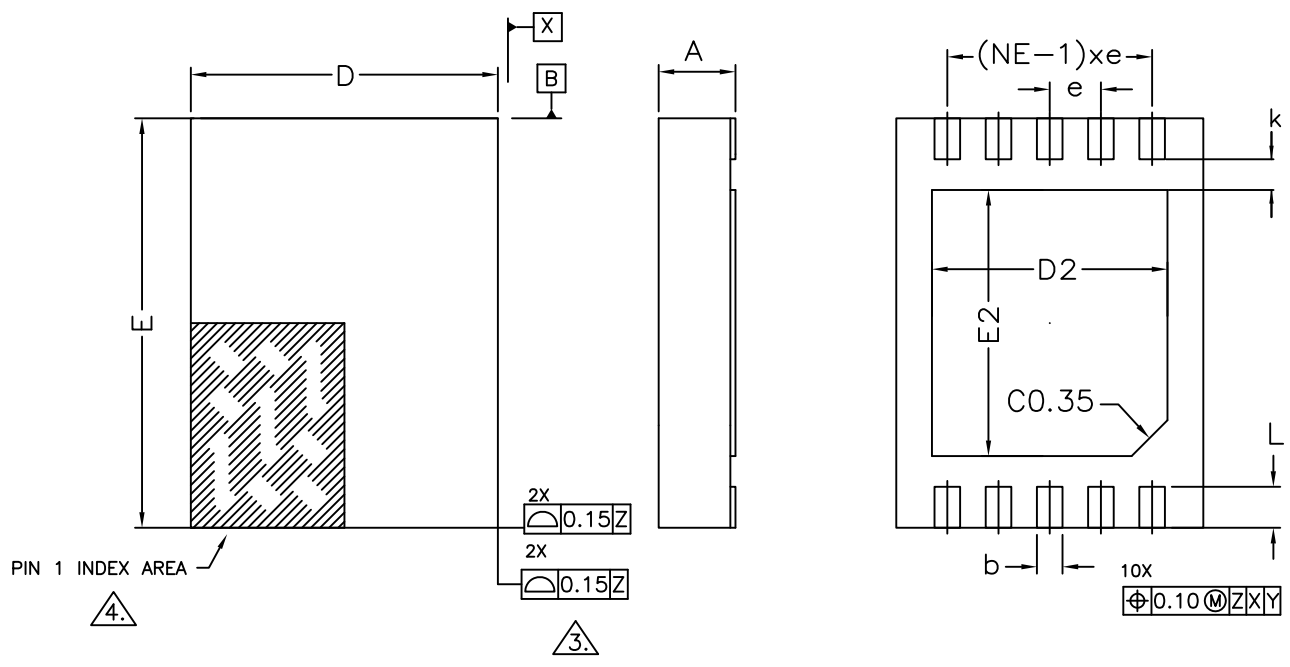
EFFECTIVE DATE: 07/17/08

ORIGINATOR: JEFF WALKER

MOST RECENT CHANGES

FROM	TO
DALLAS DOCUMENT CONTROL SYSTEM DOC 56-G0012-001, REV A, LOGO-DALLAS/MAXIM	INITIAL RELEASE INTO MAXIM DOCUMENT CONTROL LOGO-MAXIM


REVISIONS			
LTR.	DESCRIPTION	DATE	APPROVED
A			



NOTES:

- DIMENSIONING AND TOLERANCES PER ASME Y14.5M-1994.
- ALL DIMENSION ARE IN MM. ANGLES IN DEGREES.
- BILATERAL TOLERANCE ZONE IS APPLIED TO EACH SIDE OF THE PACKAGE BODY.
- A1 CORNER MUST BE IDENTIFIED BY INK/LASER MARK ON TOP PACKAGE, AND CHAMFERED PAD ON BOTTOM PACKAGE
- COPLANARITY APPLIES TO THE EXPOSED PAD AS WELL AS THE TERMINALS. COPLANARITY SHALL NOT EXCEED 0.08 mm.
- WARPAGE SHALL NOT EXCEED 0.10 mm.
- REFER JEDEC MO-229.

10 LEAD			
SYM	MIN	NOM	MAX
A	0.70	0.75	0.80
D	2.90	3.00	3.10
E	3.90	4.00	4.10
A1	0.05 MAX		
L	0.30	0.40	0.50
k	0.30 MIN		
A2	0.20 REF		
e	0.50 TYP.		
E2	2.50	2.60	2.70
D2	2.20	2.30	2.40
b	0.20	0.25	0.30
NE	5		

SIGNATURE		DATE		 PACKAGE OUTLINE, 10 LEAD TDFN 3.0mm X 4.0mm, 0.5mm PITCH							
DDC. CONTROL:								TITLE			
ENGR. MGR:								SIZE		FSCM NO.	
MFG. ENGR:								PART NO.		REV.	
CHECKED BY: S. CHINNUSAMY		08/06		A		21-0268		A			
DRAWN BY: JFD		08/06		SCALE		N/A		SHEET 1 of 1			

REVISION HISTORY

REV	CHANGES MADE	DATE	INIT.
A	ECN# HQ-08-5261. INITIAL RELEASE INTO MAXIM DOCUMENT CONTROL. LOGO-MAXIM	07/17/08	JW



TITLE: Marketing Outline, 10 LEAD TDFN 3.0MM X 4.0MM, 0.5MM PITCH

DOCUMENT I.D.
21-0268

REVISION
A

PAGE
3