



**DOCUMENT TITLE:
MARKETING OUTLINE, TO-92 3-PIN**

DOC ID # 21-0248

NEW REV: A

ECN#: HQ-08-5041

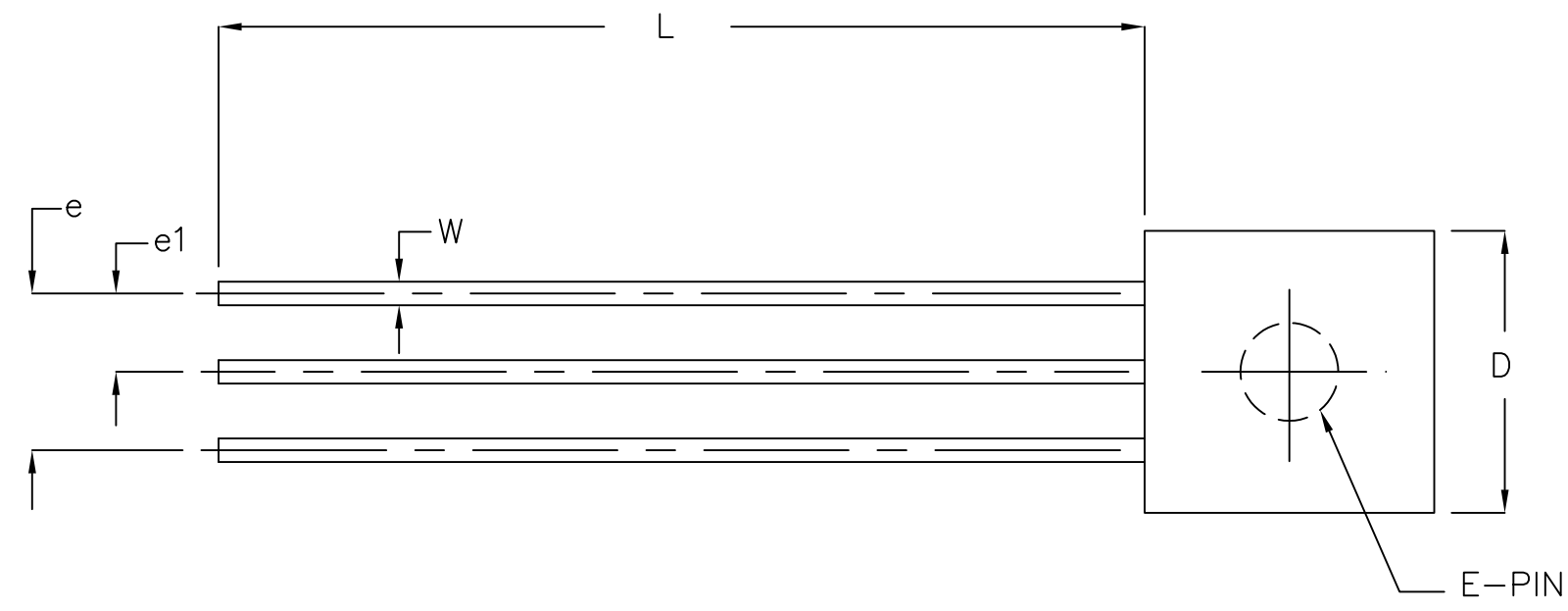
EFFECTIVE DATE: 06/23/08

ORIGINATOR: JEFF WALKER

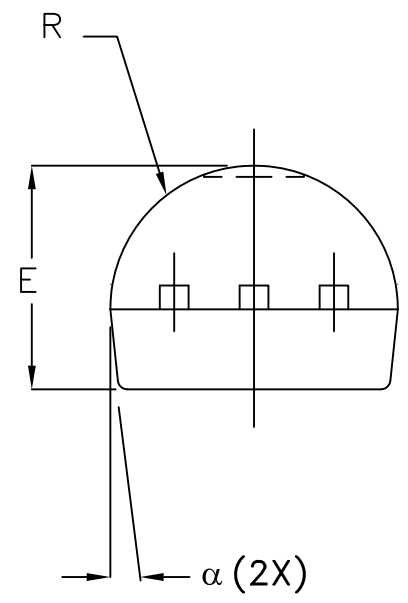
MOST RECENT CHANGES

FROM	TO
DALLAS DOCUMENT CONTROL SYSTEM DOC ID 56-G0006-001, REV A. LOGO-DALLAS/MAXIM	INITIAL RELEASE INTO MAXIM DOCUMENT CONTROL LOGO-MAXIM

REVISIONS			
LTR	DESCRIPTION	DATE	APPROVED
A			



SYMBOL	INCHES		MILLIMETERS	
	MIN	MAX	MIN	MAX
A	.170	.195	4.32	4.95
b	.014	.020	0.36	0.51
E	.130	.155	3.30	3.94
e	.095	.105	2.41	2.67
e1	.045	.055	1.14	1.40
L	.500	.610	12.70	15.49
R	.085	.095	2.16	2.41
S1	.045	.060	1.14	1.52
W	.016	.022	0.41	0.56
D	.175	.195	4.45	4.95
α	4°	6°	4°	6°



- NOTE:
1. PACKAGE OUTLINE EXCLUSIVE OF ANY MOLD FLASHES DIMENSION.
 2. PACKAGE OUTLINE EXCLUSIVE OF BURR DIMENSION.
 3. CONTROLLED DIMENSION IS INCH.
 4. MEETS JEDEC TO-226 AA.

SIGNATURE	DATE	MAXIM			
ASSY ENGR:					
PROD. ENGR:					
DES. ENGR:		MARKETING OUTLINE, TO-92, 3-PIN			
CHECK BY: TWM	12/01	SIZE D	FSCM NO	DWG NO 21-0248	REV A
DRAWN BY: JFD	12/01	SCALE N/A		SHEET 1 OF 1	

REVISION HISTORY

REV	CHANGES MADE	DATE	INIT.
A	ECN# HQ-08-5041. INITIAL RELEASE INTO MAXIM DOCUMENT CONTROL. LOGO-MAXIM	06/23/08	JW



TITLE: MARKETING OUTLINE, TO-92 3-PIN

DOCUMENT I.D.
21-0248

REVISION
A

PAGE 3