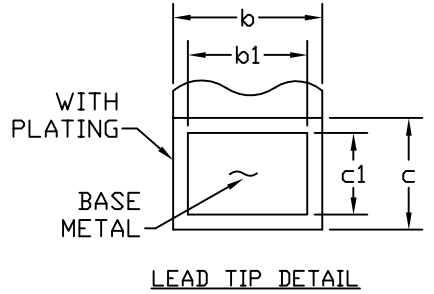
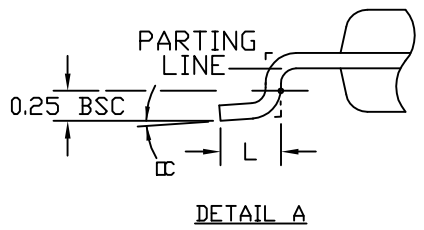
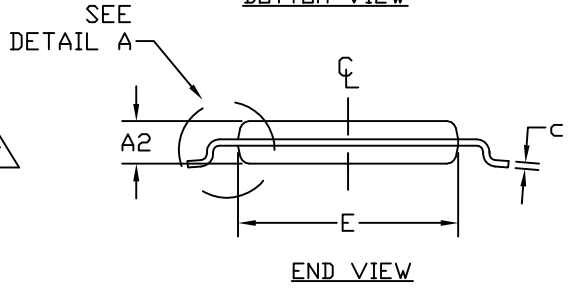
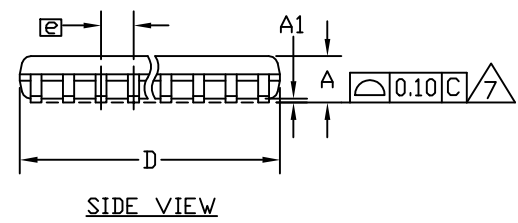



SYMBOL	COMMON DIMENSIONS			
	MILLIMETERS		INCHES	
	MIN.	MAX.	MIN.	MAX.
A	--	1.10	--	0.043
A1	0.05	0.15	0.002	0.006
A2	0.85	0.95	0.033	0.037
b	0.19	0.30	0.007	0.012
b1	0.19	0.25	0.007	0.010
c	0.090	0.20	0.004	0.008
c1	0.090	0.135	0.004	0.0053
D	SEE VARIATIONS		SEE VARIATIONS	
E	4.30	4.50	0.169	0.177
e	0.65 BSC		0.026 BSC	
H	6.25	6.50	0.246	0.256
L	0.50	0.70	0.020	0.028
N	SEE VARIATIONS		SEE VARIATIONS	
Y	2.60	3.10	0.102	0.122
α	0°	8°	0°	8°



JEDEC	N	Pkg.Code	VARIATIONS			
			MILLIMETERS		INCHES	
			MIN.	MAX.	MIN.	MAX.
ABT-1	14	D U14E-3	4.90	5.10	0.193	0.201
		X	2.80	3.10	0.110	0.122
ABT	16	D U16E-3	4.90	5.10	0.193	0.201
		X	2.60	3.10	0.102	0.122
ACT	20	D U20E-1	6.40	6.60	0.252	0.260
		X	3.80	4.20	0.150	0.165
ACT	20	D U20E-4	6.40	6.60	0.252	0.260
		X	4.50	4.90	0.177	0.193
AET	28	D U28E-4	9.60	9.80	0.378	0.386
		X	5.20	5.60	0.205	0.220
AET	28	D U28E-5	9.60	9.80	0.378	0.386
		X	6.50	6.90	0.256	0.272

- NOTES:
1. DIMENSIONS D AND E DO NOT INCLUDE FLASH.
  2. MOLD FLASH OR PROTRUSIONS NOT TO EXCEED 0.15mm PER SIDE.
  3. CONTROLLING DIMENSION: MILLIMETERS.
  4. MEETS JEDEC OUTLINE MO-153. SEE JEDEC VARIATIONS TABLE.
  5. "N" REFERS TO NUMBER OF LEADS.
  6. EXPOSED PAD FLUSH WITH BOTTOM OF PACKAGE WITHIN .002".
  7. THE LEAD TIPS MUST LIE WITHIN A SPECIFIED ZONE. THIS TOLERANCE ZONE IS DEFINED BY TWO PARALLEL PLANES. ONE PLANE IS THE SEATING PLANE, DATUM [-C-]; THE OTHER PLANE IS AT THE SPECIFIED DISTANCE FROM [-C-] IN THE DIRECTION INDICATED.
  8. MARKING IS FOR PACKAGE ORIENTATION REFERENCE ONLY.
  9. NUMBER OF LEADS SHOWN ARE FOR REFERENCE ONLY.
  10. ALL DIMENSIONS APPLY TO BOTH LEADED (-) AND PbfREE (+) PKG. CODES.

-DRAWING NOT TO SCALE-



TITLE:  
PACKAGE OUTLINE,  
TSSOP 4.4mm BODY, EXPOSED PAD

APPROVAL	DOCUMENT CONTROL NO. 21-0108	REV. G	1/1
----------	---------------------------------	-----------	-----